

# 102 Chesapeake Way

Chapel Hill, NC 27516



*Homestead Village, single-floor home with updated kitchen and great access to shopping!*

Year Built 2000 • 2052 Heated Square Feet • 0.32 acres  
3 Bedrooms • 2 Bathrooms

MLS# 2134984



**Desiree Goldman** Broker, ABR, GRI, CHLMS

*Exceptional Homes - Exceptional Service*



[www.DesireeGoldman.com](http://www.DesireeGoldman.com)

919.696.5848

[Desiree@DesireeGoldman.com](mailto:Desiree@DesireeGoldman.com)

*Family Room*



*Family Room*

*Living Room*



*Dining Room*

*Kitchen*



*Kitchen*

*Master Bedroom*



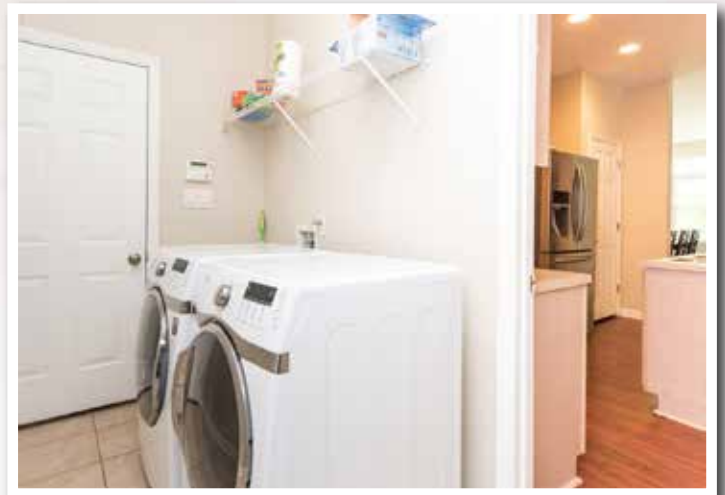
*Master Bathroom*

*Bedroom*



*Bedroom*

*Bathroom*



*Laundry*



**102 Chesapeake Way**  
Chapel Hill, NC 27516

*Special Features*

- Open floorplan with great natural light throughout entire home
- Updated kitchen with new stainless steel appliances
- Master suite with walk-in closets, dual sinks, garden tub and shower
- Beautiful private, wooded backyard
- 10 minutes to UNC, close to Timberlyne, Homestead Park, and I-40
- W/D, refrigerator convey

*To view additional photos and other specifications, visit [www.DesireeGoldman.com](http://www.DesireeGoldman.com)*

*Room Dimensions & Locations*

Living Room	14 x 15.3	Main Floor
Dining Room	8.4 x 15.3	Main Floor
Family Room	13.8 x 14	Main Floor
Office/Study	9.6 x 16.3	Main Floor
Kitchen	9 x 14.3	Main Floor
Breakfast Area	7.6 x 16.2	Main Floor
Master Bedroom	12.9 x 15.5	Main Floor
Second Bedroom	10.8 x 13.6	Main Floor
Third Bedroom	10.4 x 13.6	Main Floor
Porch	8 x 25	Main Floor
Deck	10 x 12	Main Floor
Garage	19.8 x 20.6	Main Floor



**Desiree Goldman** Broker, ABR, GRI, CHLMS  
*Exceptional Homes - Exceptional Service*



[www.DesireeGoldman.com](http://www.DesireeGoldman.com)

919.696.5848

[Desiree@DesireeGoldman.com](mailto:Desiree@DesireeGoldman.com)