

108 Worsham Dr.

Chapel Hill, NC 27516



*Open floorplan and private backyard in the heart
of beautiful Parkside!*

Year Built 2002 • 3293 Heated Square Feet • 0.21 acres
5 Bedrooms • 3 Bathroom • Bonus Room

Offered at \$490,000

MLS# 2066989



Desiree Goldman Broker, ABR, GRI, CHLMS

Exceptional Homes - Exceptional Service



www.DesireeGoldman.com

919.696.5848

Desiree@DesireeGoldman.com

Family Room



Living Room

Kitchen



Kitchen

Dining Room



Breakfast Room

Master Bedroom



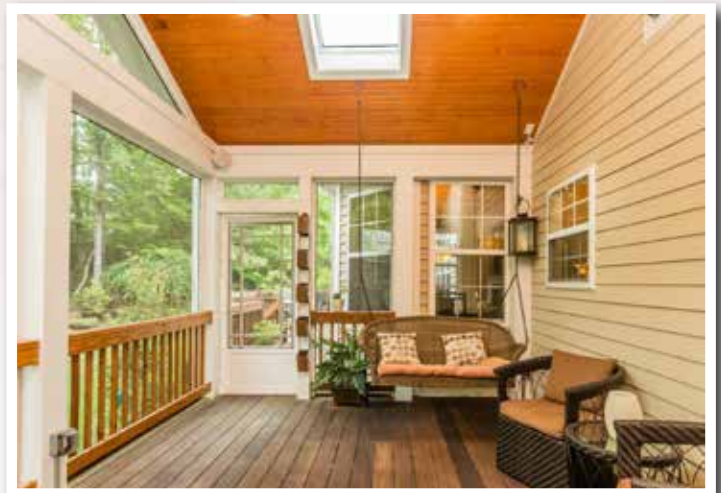
Main Floor Bedroom

Bedroom/Office



Bedroom

Bonus Room



Screened Porch



108 Worsham Dr.
Chapel Hill, NC 27516

Special Features

- Open first floor for very fluid living
- 5 bedrooms and a bonus room gives a vast amount of space to mold to your liking
- Full main floor bedroom with bathroom
- Hardwood floors on first and second floor
- New carpet in bonus room and main floor bedroom
- Beautiful screen porch, Tigerwood deck with yard backing up to greenspace
- House has irrigation system
- Chapel Hill/Carrboro schools
- HOA fees \$100/biannually to cover common areas

To view additional photos and other specifications, visit www.DesireeGoldman.com

Room Dimensions & Locations

Foyer	11 x 9.6	Main Floor
Living Room	14 x 13.3	Main Floor
Dining Room	13.5 x 13	Main Floor
Family Room	19.1 x 15.9	Main Floor
Kitchen	15 x 13.3	Main Floor
Breakfast Area	10.2 x 7.2	Main Floor
Master Bedroom	17 x 16.6	Second Floor
Second Bedroom	12.6 x 11	Second Floor
Third Bedroom	12.1 x 11.9	Second Floor
Fourth Bedroom	12.9 x 9.9	Second Floor
Fifth Bedroom	12.3 x 11.6	Main Floor
Bonus Room	22.3 x 14.2	Second Floor
Screened Porch	21.8 x 11.9	Main Floor
Deck	18 x 18	Main Floor
Garage	26 x 19.3	Main Floor



Desiree Goldman Broker, ABR, GRI, CHLMS
Exceptional Homes - Exceptional Service



www.DesireeGoldman.com

919.696.5848

Desiree@DesireeGoldman.com